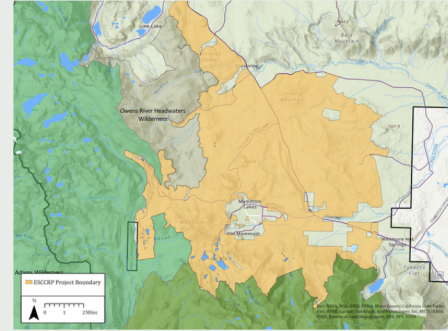




# Eastern Sierra Climate & Communities Resilience Project:

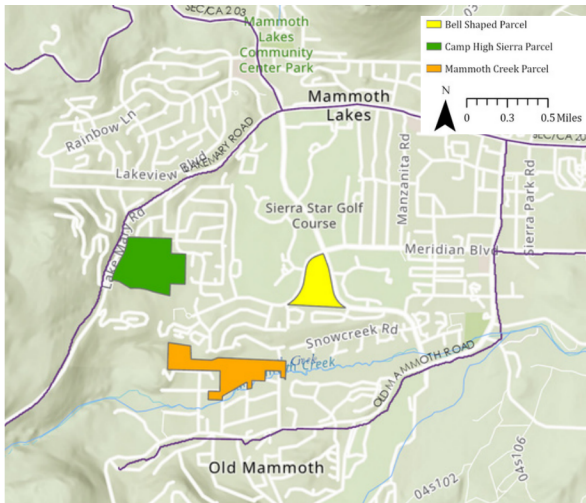
## SUMMER 2023 TOWN PARCELS FUELS REDUCTION



### ABOUT THE ESCCRP

The Eastern Sierra Climate & Communities Resilience Project (ESCCRP), also known as the "Mammoth Donut Project" is a collaborative landscape-scale forest restoration project aiming to reduce the risk of high severity wildfire and to restore resilience to 58,000 acres in the Inyo National Forest (INF) and undeveloped, non-federal, parcels within the Town of Mammoth Lakes (TOML) municipal boundary.

### ABOUT SUMMER 2023 TOWN PARCELS FUELS REDUCTION



The Mono County and Town of Mammoth Lakes Multi-Jurisdictional Hazard Mitigation Plan which includes the Mono County Community Wildfire Protection Plan identifies hazards and risks associated with wildland fire in proximity to TOML and identifies areas of highest concern.

Through CALFIRE Forest Health Grant Program funding and in partnership with TOML, Mammoth Lakes Fire Department, City of Los Angeles, and Mammoth Mountain Ski Area, Whitebark Institute will be conducting fuels reduction on three parcels within Mammoth Lakes that were identified as high to very high fire risk to wildfire: Bell-shaped Parcel, Camp High Sierra, and Mammoth Creek Parcels.

The treatments for these parcels were developed by a Registered Professional Forester and will be reviewed by CAL FIRE specialists, Regional Water Quality Control Board, and California Department of Wildlife through the CAL FIRE process called the Timber Harvest Plan (THP) to comply with the Forest Practice Act. The THP is a document that outlines what trees a private landowner will remove, how the trees will be removed, and the steps that will be taken to prevent damage to the environment. These treatments aim to reduce immediate fuel loading and restore forest health.

### TREATMENTS

Removal of live, dead, and infested trees with mechanical equipment to increase stand vigor and reduce future tree mortality induced by tree competition for water. Left untreated, the mortality in these parcels will likely continue to propagate from pests and pathogens posing a continued fire threat to the community.

### BIOMASS

Logs will be removed from site upon project completion. Slash material (limbs and branches) will be chipped and remain on site for soil stabilization.

### PROJECT TIMING

Treatments are planned for summer 2023, beginning as early as August. It is anticipated that total work time to complete these parcels is approximately three months and will be completed fall 2023.



Funding for this project provided by the California Department of Forestry and Fire Protection's Forest Health Program.

The Forest Health Program is a part of California Climate Investments (CCI), a statewide program that puts billions of Cap-and-Trade dollars to work reducing GHG emissions, strengthening the economy, and improving public health and the environment—particularly in disadvantaged communities.





# HOMEOWNER COMMUNITY MEETINGS INVITATION

Join us for a conversation to discuss project details

In collaboration with project partners, Whitebark Institute will be hosting community meetings to discuss the ESCCRP and the town parcels fuel reduction details with homeowners and community members.

## WHEN?

### JULY 2023

**24**  
**MO** virtual meeting  
5:00–6:30 pm  
Join Zoom Meeting  
<https://monocounty.zoom.us/j/82520143158>  
Meeting ID: 825 2014 3158

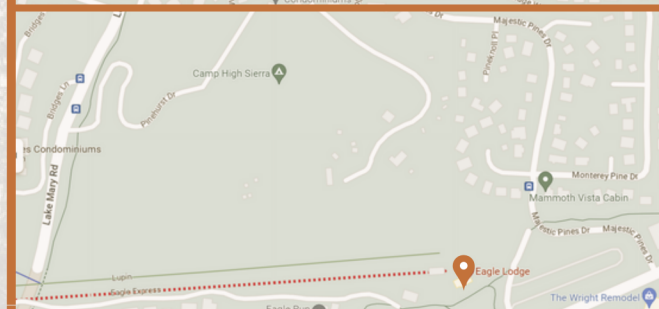
**25**  
**TU** in person meeting at  
**Bell parcel**  
5:00–6:30 pm  
Minaret road between Evening Star Dr. and Panorama Dr., Mammoth Lakes, CA

**27**  
**TH** in person meeting at  
**Camp High Sierra parcel**  
5:00–6:30 pm  
Eagle Lodge parking lot  
4000 Majestic Pines Dr Ste 110, Mammoth Lakes, CA

**28**  
**FR** in person meeting at  
**Mammoth Creek parcel**  
5:00–6:30 pm  
End of road on North Waterford ave., Mammoth Lakes, CA



For more information on the ESCCRP and meeting locations visit the project's website [www.eswildfirealliance.org/escgrp](http://www.eswildfirealliance.org/escgrp) or scan the QR code with your phone.



Funding for this project provided by the California Department of Forestry and Fire Protection's Forest Health Program.

The Forest Health Program is a part of California Climate Investments (CCI), a statewide program that puts billions of Cap-and-Trade dollars to work reducing GHG emissions, strengthening the economy, and improving public health and the environment— particularly in disadvantaged communities.

