

Eastern Sierra Climate and Communities Resilience Project

Boundary Revisions Packet

This packet is designed to display the revisions to the ESCCRP boundary as of May 2021. To view the project boundary revisions in greater detail please visit the project web map at <https://www.eswildfirealliance.org/escrpmaps>.

Map 1: Boundary Revisions Overview

The first map of the Boundary Revisions Packet is an overview of the original boundary and the boundary revised May 2021. The landownership data used to create the original boundary was outdated; the revised boundary was edited using the Ownership Blocks Dataset from the Open GeoData Portal for Mono County and the Town of Mammoth Lakes (<https://gis-monomammoth.opendata.arcgis.com/datasets/MonoMammoth::ownership-blocks/about>).

Source Data Information:

Orange line: revised boundary – May 2021 (revised using Ownership Blocks, Mono County GIS)
Yellow line: original boundary (Inyo National Forest GIS)

Map 2: Outer ESCCRP Details

The second map of the Boundary Revisions Packet demonstrates the outer boundary revisions. Key points of interest are numerically labeled in light blue beginning at the top then moving clockwise. The information provided below correspond with revision on Map 2: Outer ESCCRP Details.

1. Moved north to Owen's River/ Big Springs Road
2. 40-acre block north of Shady Rest included
3. Moved to logical boundary out of the wetland following instead a USFS road
4. Moved east so project does not cross over into Fresno County
5. Brought boundary inward at 4 locations which spilled over existing Reds Meadow NEPA Unit
6. Excluded the parcels involved in MMSA/INF land exchange which no longer falls under Federal Ownership

Source Data Information:

Orange line: revised boundary – May 2021 (revised using Ownership Blocks, Mono County GIS)
Yellow line: original boundary (Inyo National Forest GIS)
Blue line: county boundary (County Boundaries, Mono County GIS)
Yellow fill: Reds Meadow NEPA unit (Inyo National Forest GIS)
Purple fill: INF-MMSA land exchange (MMSA KMZ)

Map 3: Inner Boundary Details

The third map of the Boundary Revisions Packet demonstrates the revisions to the ESCCRP inner boundary (the TOML municipal boundary and inward). The boundary was revised to match the Inyo National Forest ownership boundaries from Mono County's Ownership Blocks dataset. Screenshots are provided below to highlight some of the key areas of interest where the boundary had previously crossed over into non-federal ownership in higher resolution. The figure numbers correspond with the light green labels on Map 3: Inner Boundary Details.

Source Data Information:

Orange line: revised boundary – May 2021 (revised using Ownership Blocks, Mono County GIS)

Yellow line: original boundary (Inyo National Forest GIS)

Green fill: Inyo National Forest ownership block (Ownership Blocks, Mono County GIS)

Yellow fill: Non-federal parcel additions (Tax Parcels, Mono County GIS)



Figure 1. A zoomed in image of the northernmost part of the inner ESCCRP. Corresponds with #1 on Map 3.



Figure 2. A zoomed in image near the eastern portion of the inner ESCCRP. Corresponds with #2 on Map 3.

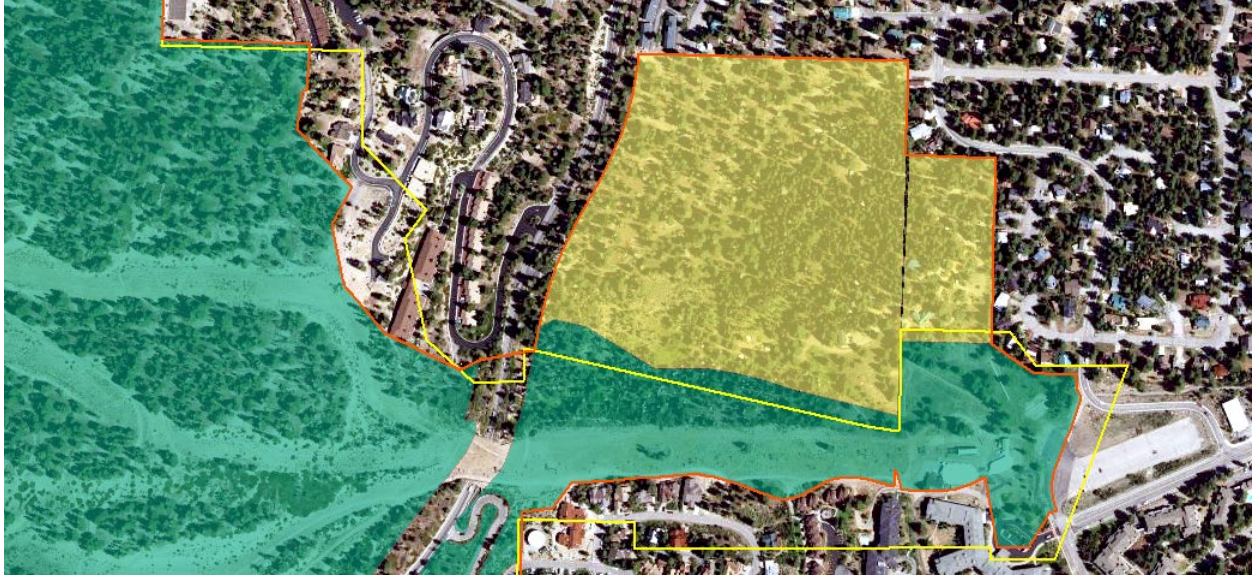


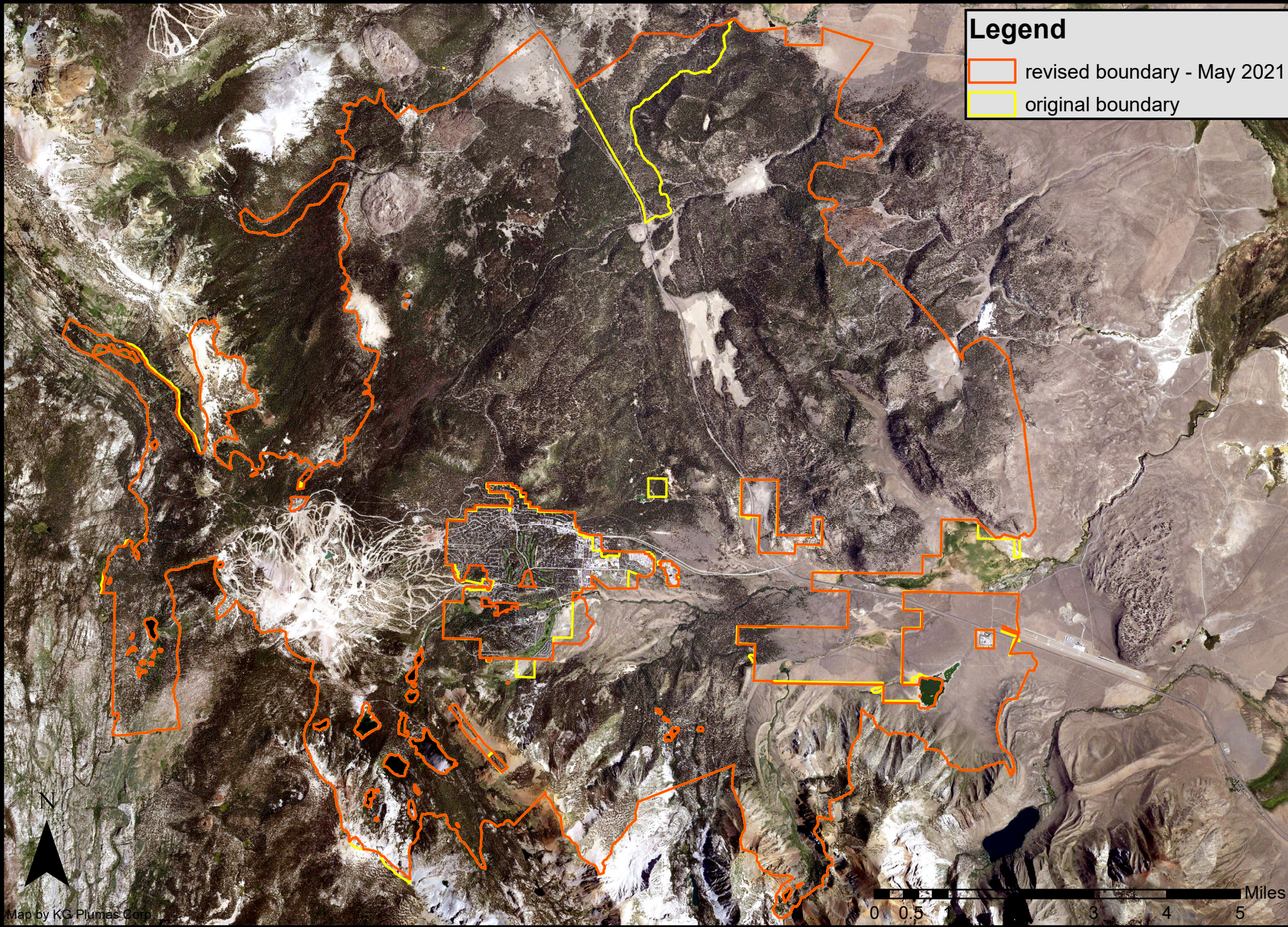
Figure 3. A zoomed in image Near Camp High Sierra on western portion of the inner ESCCRP. Corresponds with #3 on Map 3.



Figure 4. A zoomed in image near the northern portion of the inner ESCCRP. Corresponds with #4 on Map 3.

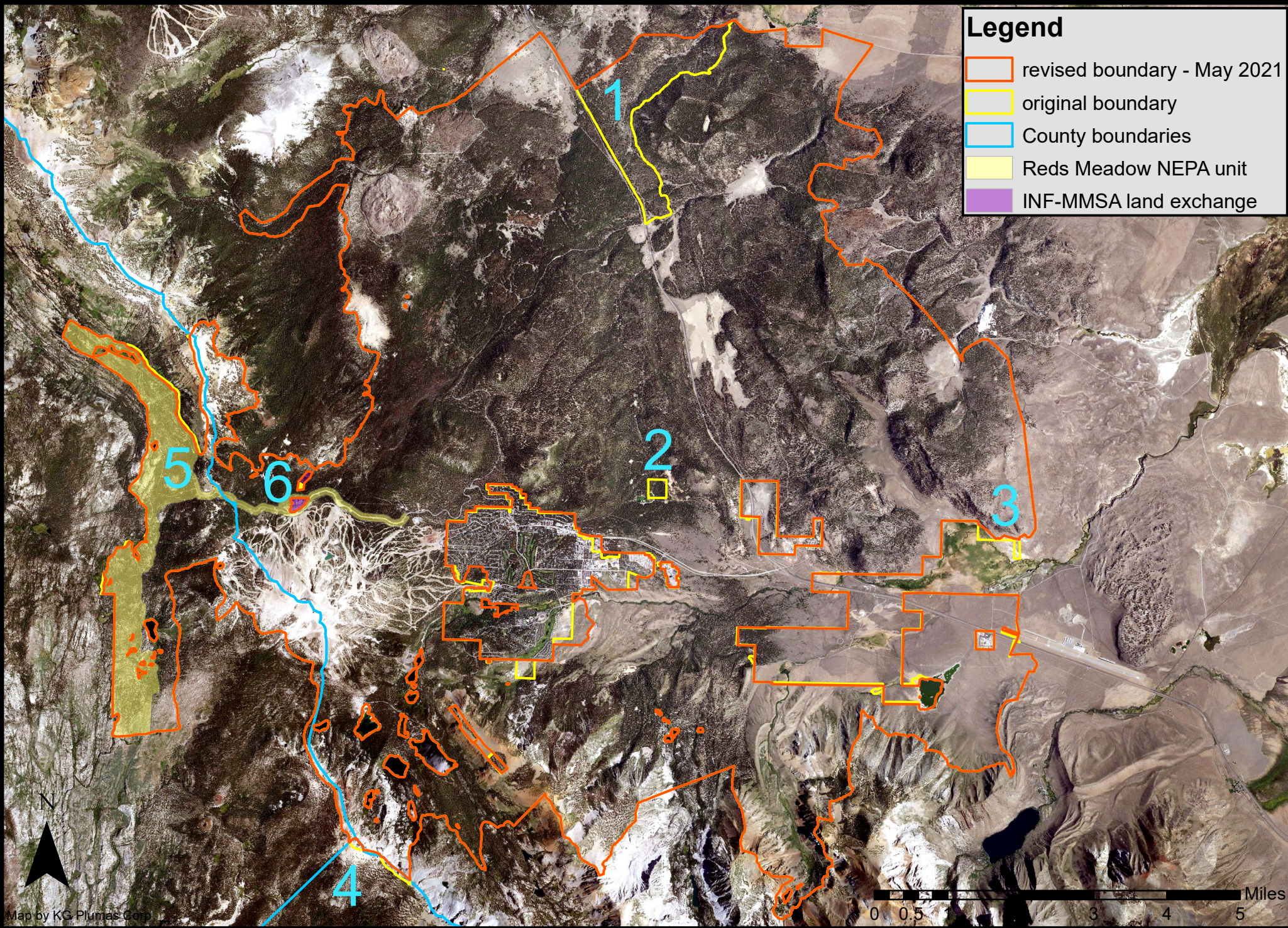
Eastern Sierra Climate & Communities Resilience Project

Map 1: Boundary Revisions Overview



Eastern Sierra Climate & Communities Resilience Project

Map 2: Outer ESCCRP Details



Eastern Sierra Climate & Communities Resilience Project

Map 3: Inner ESCCRP Details

